

## VTS at the Port of Milford Haven

### Introduction

The VTS for the Port of Milford Haven is located at Hubberston Point, Milford Haven & operates a 24-hour, 365 days a year service for all marine traffic within the VTS area. The VTS operates under the call sign 'Milford Haven VTS' & utilise VHF radio channel 12 as its primary radio frequency.

Milford Haven VTS is a Vessel Traffic Service (VTS) is managed by the Port Authority, providing full VTS function including, assistance, coordination. information and organisation of navigational movements.

All shipping movements are coordinated by Milford Haven VTS and the system is mandatory for all vessels over 20 metres in length that are operating within the VTS area.

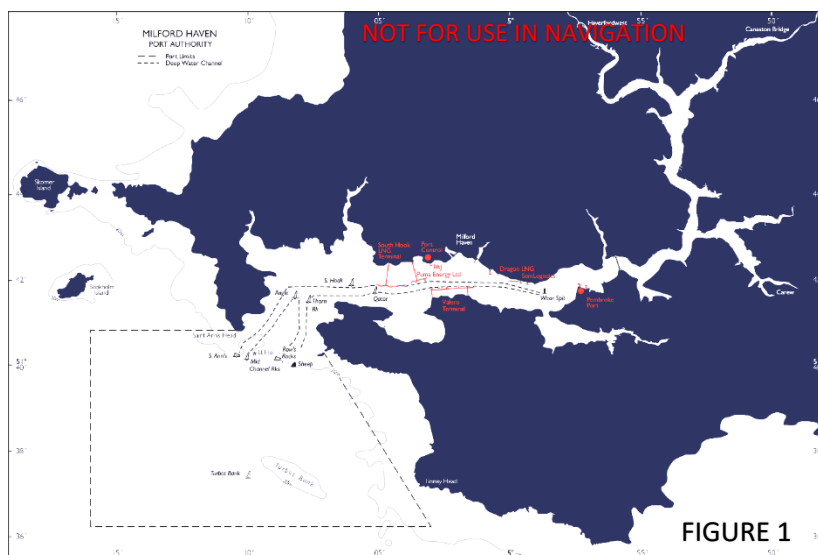
QUICK REFERENCE	
TITLE OF VTS	Milford Haven VTS
VTS CATEGORISATION	A Vessel Traffic Service (VTS) is managed by the Port Authority, providing full VTS function including, assistance, coordination. information and organisation of navigational movements.
CALL SIGN	'Milford Haven VTS'
VHF FREQUENCIES	VHF Channel 12 is the main operational channel throughout the VTS area. Listening watch kept on 09, 11, 12, 14, 15 and 16.
TELEPHONE	01646 696100
EMAIL	vts@mpha.co.uk
LOCATION	Hubberston Point (51° 42'.44 N, 05° 03'.09 W)
INFORMATION BROADCASTS	Navigational warnings are broadcast every 6 hours commencing at 0300UTC & Gale Warnings on receipt of warning on VHF Channels 12 & 14.

### VTS Jurisdiction

Figure 1 gives an outline view of Milford Haven VTS's jurisdiction.

The sea area bounded by:

- An imaginary line commencing at the western extremity of Studdock Point and drawn in a south easterly direction to the point of intersection of latitude 51° 36'.25 N with longitude 05° 03'.00 W, thence in a westerly direction to the point of intersection of latitude 51° 36'.25 N with longitude 05° 16'.00 W and thence in an northerly direction to the point of intersection of latitude 51° 40'.8 N with longitude 05° 16'.00 W and thence in an easterly direction to the south western extremity of St. Ann's Head; and
- The level of high water on the shores of Milford Haven and the approaches thereto within the line aforesaid, including all bays, creeks, pools, inlets and rivers as far as the tide flows other than a creek, pool or inlet into which the tide flows only through a culvert or pipe and other than a dock which is normally tidally enclosed.



For the full Port of Milford Haven VTS Policy, please refer to the Port Guidelines.

## VTS Equipment

The VTS station for the Port of Milford Haven is located at Hubberston Point, Milford Haven. From this location, VTS personnel have a view as far as St. Ann's Head to the west & Wear Spit to the east.

VHF channel 12 is the main operational channel throughout the VTS area & all mandatory reporting vessels are required to report into Milford Haven VTS using this channel (please consult navigational charts and/or Port Guidelines for Reporting Points). VTS also keep a listening watch on VHF channels 09, 11, 12, 14, 15 and 16.

The Port of Milford Haven has six radar stations located along the shoreline. St Anns X & S band both look seaward while X band radars based at Great Castle, VTS, Popton Fort and Patrick's Hill all detail traffic moving within the Haven. Radar returns are overlaid with electronic navigational charts and vessel AIS information providing an accurate and useable display of vessels moving within the VTS area.

The VTS also has use of over 60 CCTV cameras located throughout the Port.

Utilising all the VTS equipment together in the VTS station generates a live and resilient traffic image, which allows VTS operators to promote a safe and efficient waterway.

## VTS Personnel

The Milford Haven VTS is run on 24/7, 365 day basis. A team of five Duty Officers and five Marine Operators make up the day-to-day running of the VTS & are overseen by a VTS manager. All are suitably qualified to International Association of Lighthouse Authorities (IALA) and Maritime and Coastguard Agency (MCA) standards and hold the necessary V103 certification.

Powers of the Harbour Master are delegated to the Duty Officer when on watch; this includes the ability to issue Special Directions to any Vessel within the VTS area. The Marine Operator acts in a support role to aid the decision making of the Duty Officer.

Milford Haven VTS personnel will use message markers when communicating via VHF radio. These are internationally approved phrases, which are clear, precise & serve the purpose of improving VHF clarity & efficiency. The eight message markers commonly used are:

- INFORMATION: message contains observed facts.
- ADVICE: intention of sender is to influence the addressee by means of a recommendation.
- INTENTION: message concerns intended navigational action.
- WARNING: message is a warning about dangers.
- INSTRUCTION\*: intention of sender is to influence the addressee by means of a traffic instruction.
- QUESTION: message has a questioning character.
- ANSWER: message is the answer to the previous question.
- REQUEST: action is requested of addressee.

\*Instructions given as part of a Traffic Organisation Service shall be result orientated, leaving the final details of the execution to the vessel.

Navigation warnings are broadcast on VHF channels 12 & 14 by VTS operators every 6 hours commencing at 0300UTC these include Notice to Mariners and Gale warnings in force. New gale warnings are broadcast on receipt of warnings & special navigational warnings are broadcast as required.

## Incident Reporting

Vessels must report the occurrence of any Navigational Incident, including but not limited to; fire, oil pollution or any other emergency within the Port of Milford Haven to VTS on VHF channel 12 or 16 alternatively by

telephone. For more information on Incident Reporting & Port Emergency Planning, please refer to the [Port Guidelines](#) and [Port Byelaws](#).

## Navigational Assistance

On request, Milford Haven VTS can provide a navigational assistance service to any vessel that requires emergency assistance. It should be noted that all assistance will be result orientated and to assist the on-board decision making only.

## Dangerous goods in Port

All dangerous goods moving within the VTS area must be reported to VTS personnel, in the form of CERS (Central European Reporting System) documentation via Ship Agents.

## VTS Key Contacts

Harbour Master: Mike Ryan. Contact: [enquiries@mhpa.co.uk](mailto:enquiries@mhpa.co.uk)

VTS Manager: Brian Stewart. Contact: [enquiries@mhpa.co.uk](mailto:enquiries@mhpa.co.uk)

VTS: Contact: [vts@mhpa.co.uk](mailto:vts@mhpa.co.uk)

## Data Protection

In order to comply with requirements of the Data Protection Act 2018 and the Telecommunications Act 1984, communication with VTS via VHF and telephone, as well as AIS and RADAR data, is recorded to support the Duty Harbour Master in carrying out statutory functions and for the purpose of promoting maritime safety, crime prevention and public safety.

## Useful Links

- [Port Guidelines](#)
- [1984 Port Byelaws](#)
- [Pilotage & General Direction](#)
- [Towage Guidelines](#)
- [Schedule 2](#)