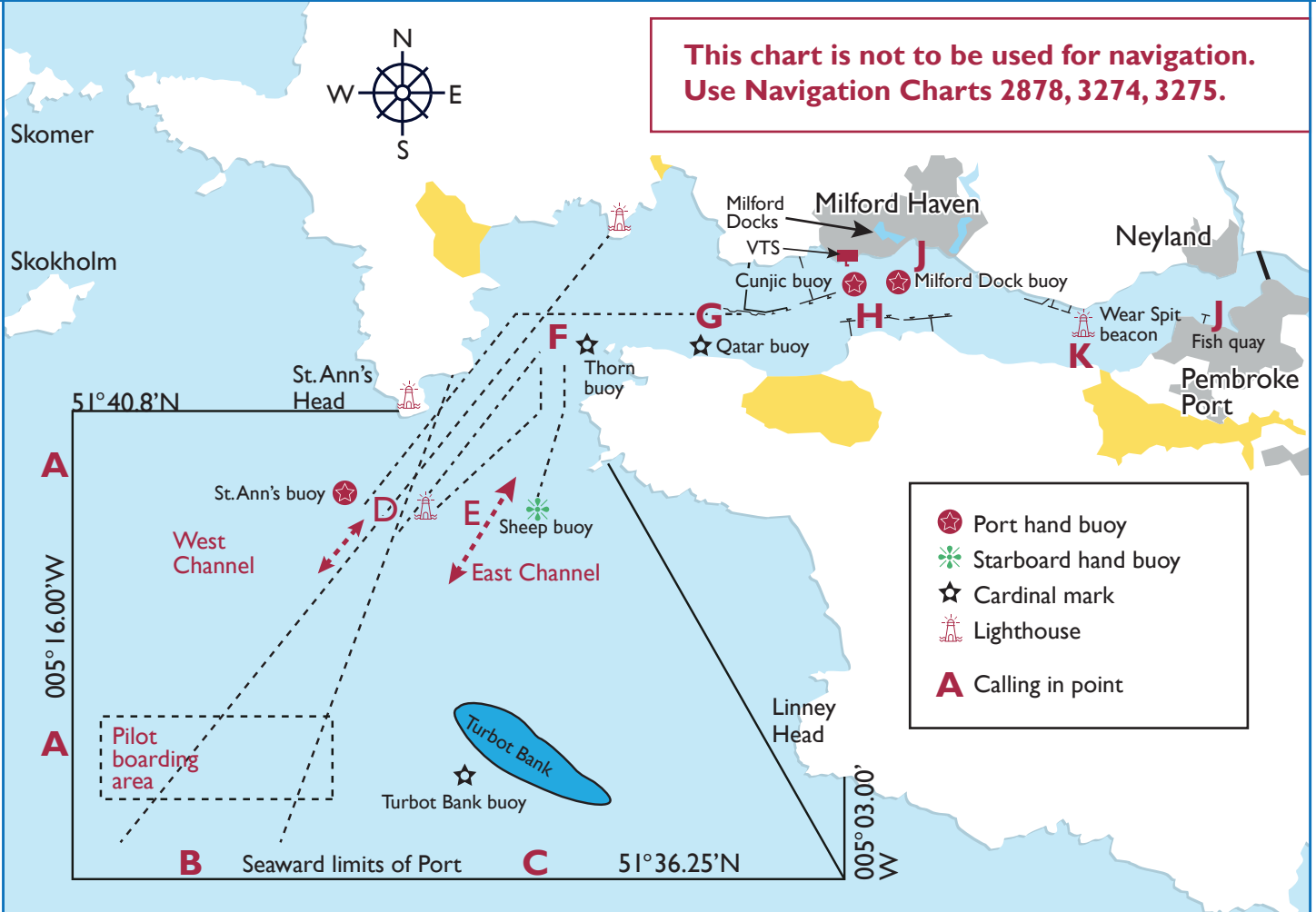




SMALL COMMERCIAL VESSELS ENTERING MILFORD HAVEN

**This chart is not to be used for navigation.
Use Navigation Charts 2878, 3274, 3275.**



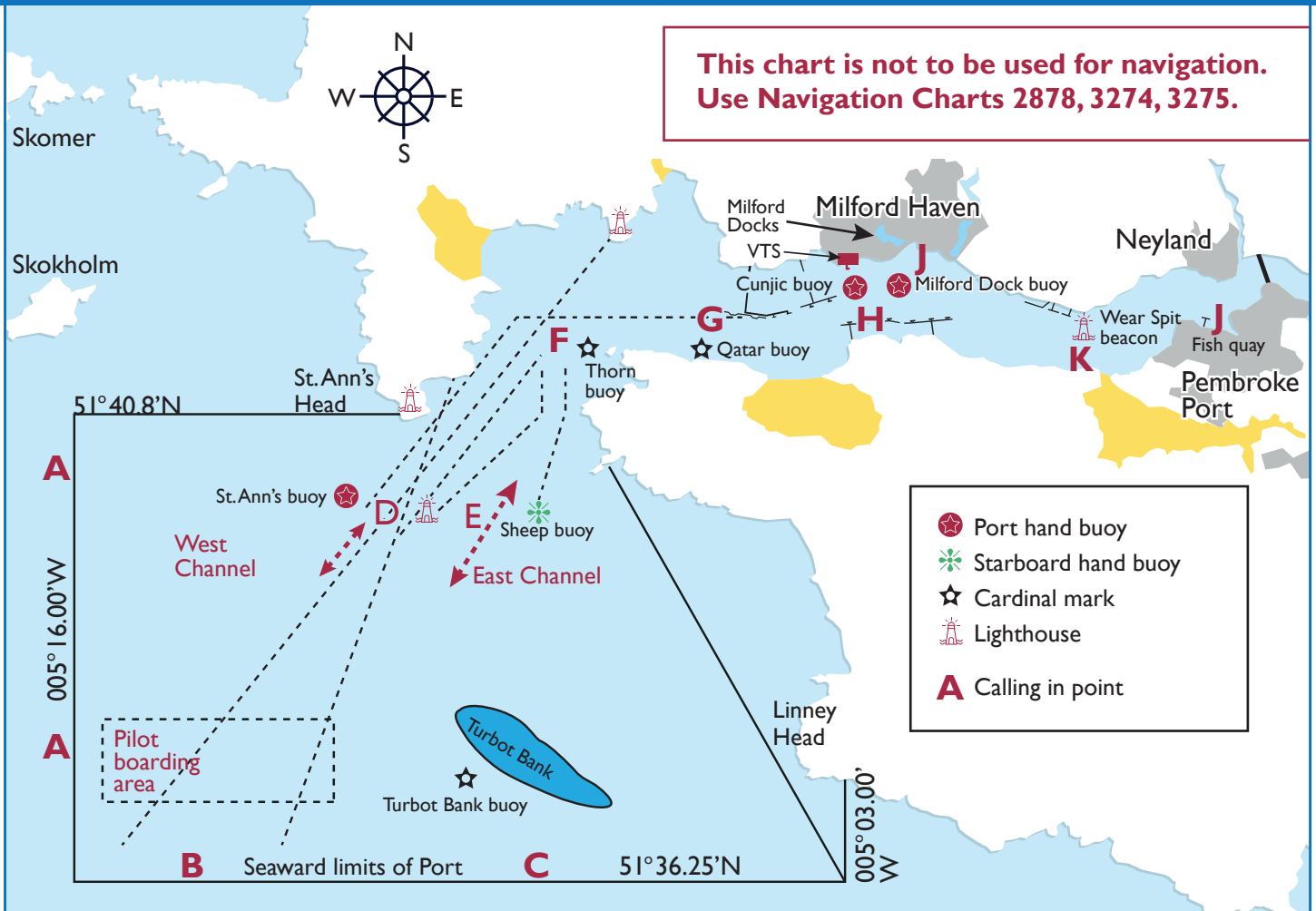
1. Call VTS on Channel 12 one hour before arrival at St. Ann's Head. If Vessel has a Milford Haven issued Fishing Vessel Permit, then provide this number and master's name to VTS; this is required for night time passage.
2. At Reporting Positions A, B and C, call VTS on Channel 12 for permission to enter. VTS will inform either west or east channel or to remain three miles from port entrance until further instructions given. Vessel to remain on Channel 12 until alongside.
3. Inform VTS when entering west/east channel (Point D/E).
4. Always use the starboard side of the channel.
5. Inform VTS when at Reporting Point F (Thorn Rock buoy).
6. Inform VTS when at Reporting Point H (Cunjic buoy). If going to Milford Docks request clearance to cross the channel.
7. Inform VTS when at Reporting Point K (Wear Spit).
8. Inform VTS when alongside Pembroke Port or in Milford Docks.
9. Do not pass any closer than 100 metres from jetties.
10. Do not overtake tankers without permission.

For further information on procedures, please check [Port Entry Guidelines](#)

The Harbourmaster, Milford Haven Port Authority, Gorsewood Drive, Milford Haven, SA73 3EP UK

VHF Ch.12 | Telephone: +44 01646 696136 | vts@mpha.co.uk | Fax: +44 01646 696110

SMALL COMMERCIAL VESSELS LEAVING MILFORD HAVEN



- Contact VTS on Channel 12 before leaving Pembroke Port or Milford Docks for permission to leave. Remain on Channel 12 until clear of west/east channel. If Vessel has a Milford Haven issued Fishing Vessel Permit, then provide this number and master's name to VTS; this is required for night time passage.
- Inform VTS when leaving Pembroke Port or Milford Docks (Point J).
- From Pembroke Port inform VTS when at Reporting Point K (Wear Spit).
- Always use the starboard side of the channel.
- Inform VTS when passing Reporting Point H (Cunjic buoy).
- Inform VTS when passing Reporting Point G (Qatar buoy). VTS will inform fishing vessel which channel to use, west or east.
- Inform VTS when clear of west/east channel.
- Do not pass any closer than 100 metres from jetties.
- Do not overtake tankers without permission.

For further information on procedures, please check [Port Entry Guidelines](#)

The Harbourmaster, Milford Haven Port Authority, Gorsewood Drive, Milford Haven, SA73 3EP UK

VHF Ch.12 | Telephone: +44 01646 696136 | vts@mpha.co.uk | Fax: +44 01646 696110